

Barts QI Poster 3- Newly Diagnosed Our Quality Improvement Journey

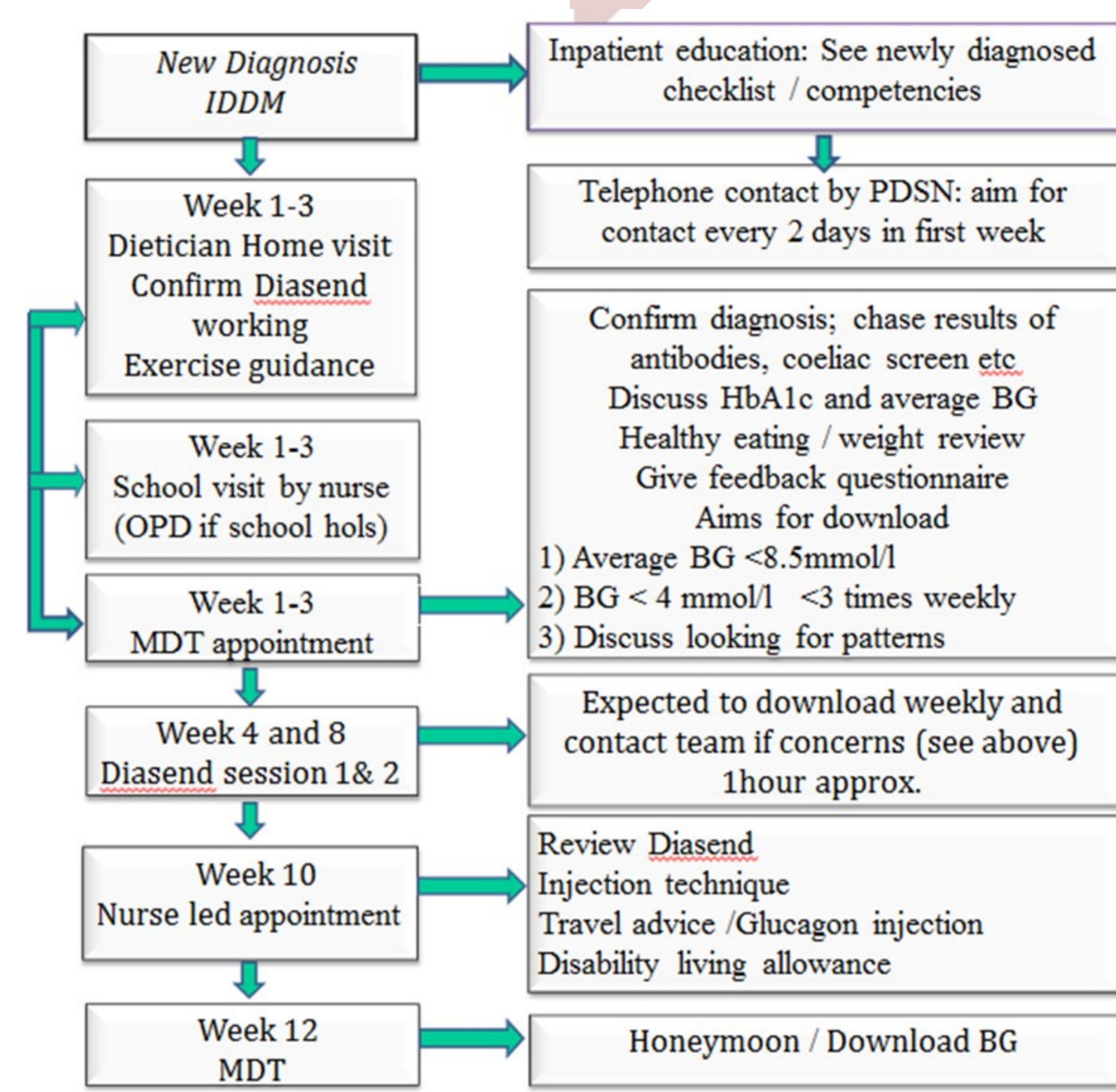
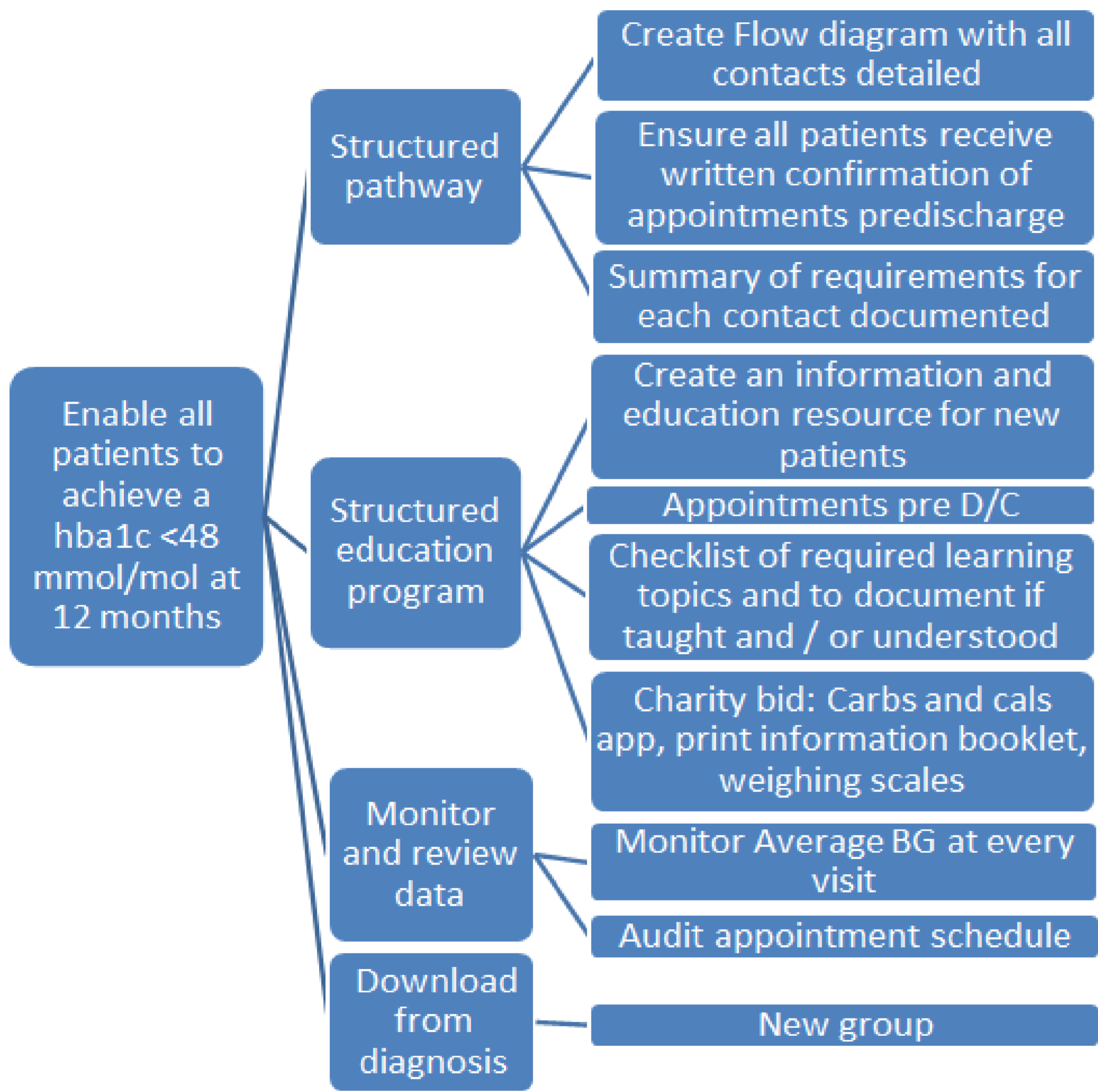
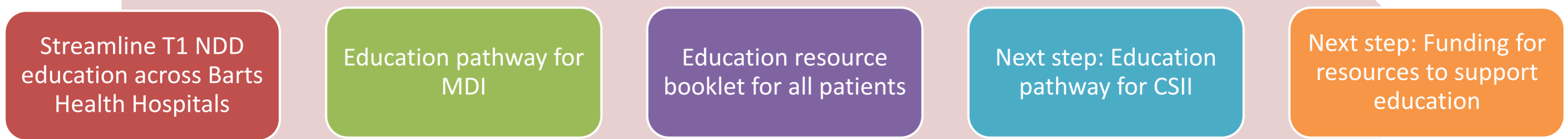
We aim that all new patients diagnosed with type 1 diabetes mellitus achieve a HbA1c <48mmol/mol at 12 months

Slough.C, Hughes.C, Cifelli.P, Skogen.W. Nash.E, Cullen.F, Akther.S, Rogan.P,

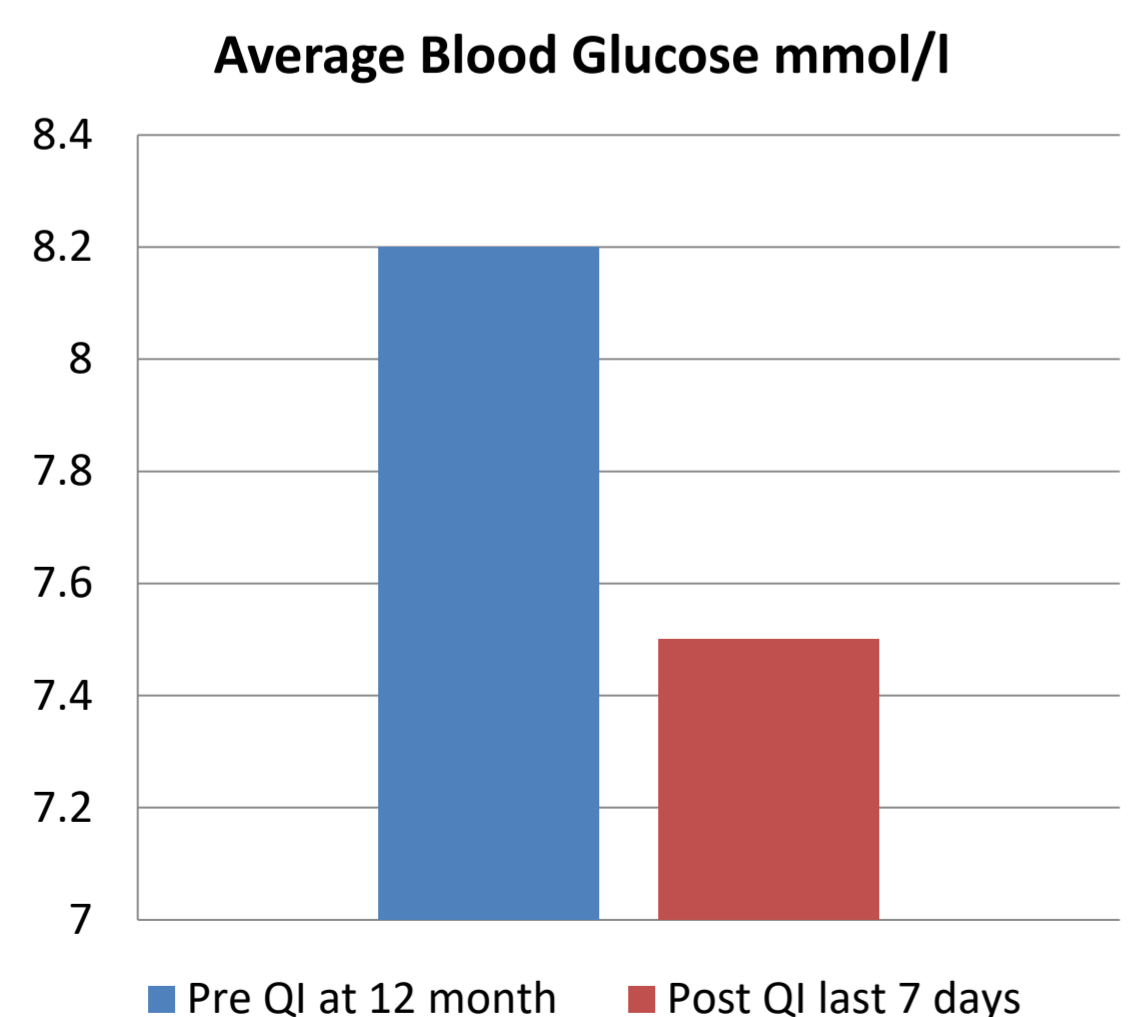


Aims

- Develop an education pathway for new patients for both MDI and CSII to standardise the education process across 3 sites
- Empower patients through improved education using new education resources – including a bespoke NDD booklet
- Collect feedback and review results using average BG and HbA1c



Results



Feedback

Bright spots

- Our own New Diagnosis Booklet
- New diagnosis pathway with clear pathway and requirements consistent across all 3 sites
- Contacts increased post diagnosis
- NDD pathway incorporates full MDT
- Median Blood Glucose at 30 days 6.9mmol/l

Future Actions

- Review on going data– PDSA cycle
- Charity bid
- Formalize NDD booklet

