



# HINCHINGBROOKE HOSPITAL DIABETES TEAM QI PROJECT

Dr Goonetilleke, Dr Ramesh, Dr Easwariah, Vicky Surrell,  
Mel Bywater, Katy Sparrow, Victoria Williams



## Our Purpose

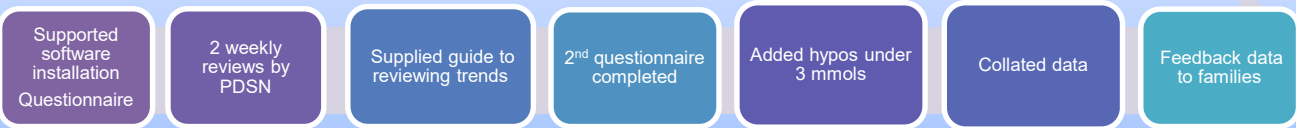
To improve education and self management skills for children aged 8-12 years to improve time in target range and HbA1c

### Our QI Journey

#### Structured education



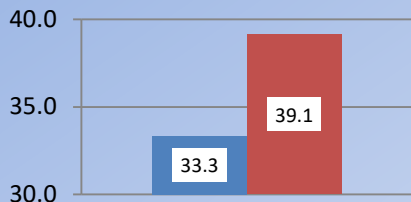
#### Downloading



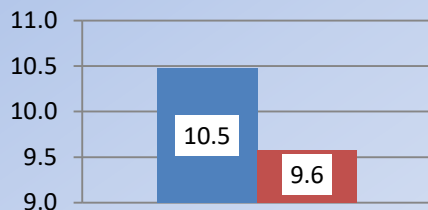
	1	2	3	4	5	6	7	8	9	10	11	12	13	14	15	16	17	18	19	20	21	22	23	24	25	26	27	28	29	30
Mean	2.6				4.0		7.5		6.5	8.2		4.2		6.9																
SD	6.0				5.6		5.6		4.6	6.7		4.8		6.9																
Min					3.7		6.0		5.8	6.6		5.1		5.0																5.7
Max					5.9		8.8		7.0	5.3		6.3		7.0																7.0
Q1					2.9		4.8		6.3	5.6		4.5		4.6																
Q3					5.1		6.0		6.1	5.6		6.0		5.1																
Q4					3.7		4.6		6.1	4.0		5.0		5.1																
Q5					5.3		5.3		6.8	4.5		4.3		6.0																

## Outcome data

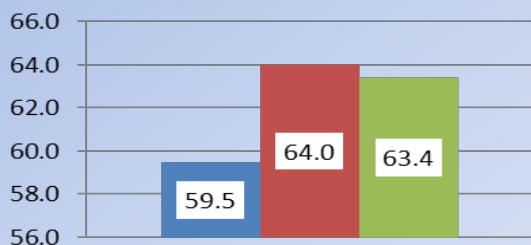
% BG in range start/finish



Average BG start/finish



HbA1c averaged start, middle and end



### Structured education

20% of children attended the carbohydrate workshop – all positive feedback

## Feedback from parents

- 50% reported more confidence in identifying patterns in BGs
- Most parents still want support/reassurance when dose adjusting
  - "It has been extremely helpful"
  - "not sure would download 2 weekly"
  - "Will set up reminders to download"
  - "time constraints... very busy"

## What have we learnt?

- Change requires a team effort! We now work more cohesively
- Difficult to maintain momentum; families and staff
- Team members need to be flexible in their approach to interventions
- Important to allocate sufficient team time
- Quality improvement requires structured approach to keep on track and is an evolving process

## Further actions...

- Final patient questionnaire.
- Coffee morning for families to share outcomes
- Downloading station
- Rolling structured education programme to continue
- Dosage adjustment guide

